

2C



Swingarm Bearing Removal and Installation

Refer to [Swingarm Removal and Installation](#).

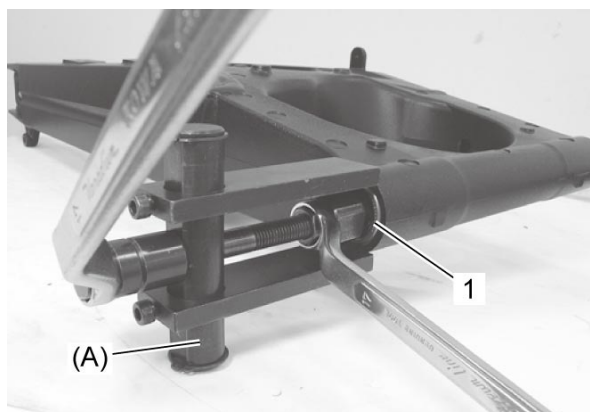
Refer to [Rear Suspension Components](#).

Removal

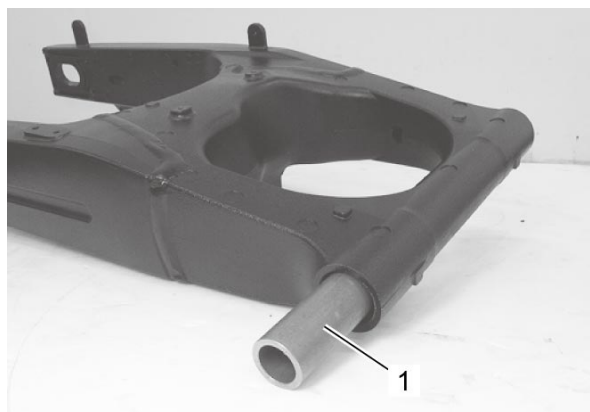
- 1) Remove the swingarm pivot bearings (1) on both sides using the special tool.

Special Tool

(A): 09921-20240



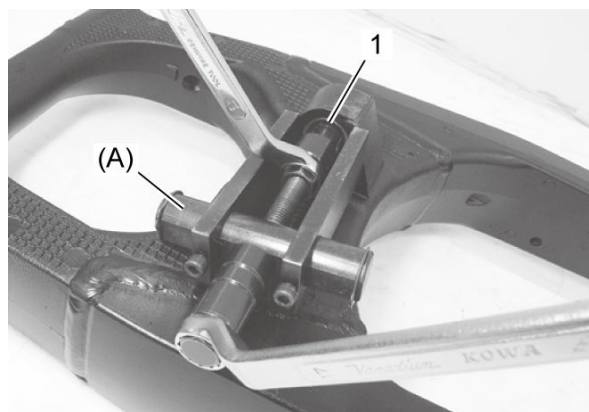
- 2) Remove the center spacer (1).



- 3) Remove the cushion lever bearing (1) using the special tool.

Special Tool

(A): 09921-20240



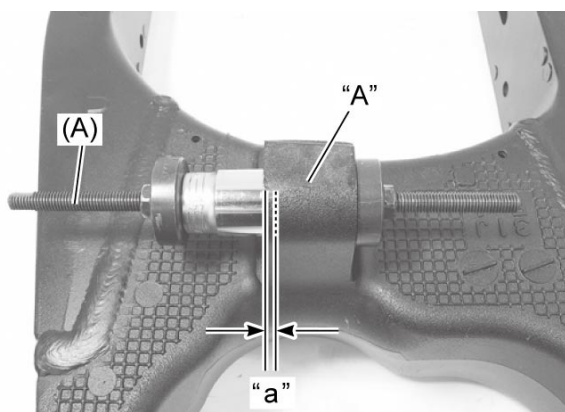
Installation

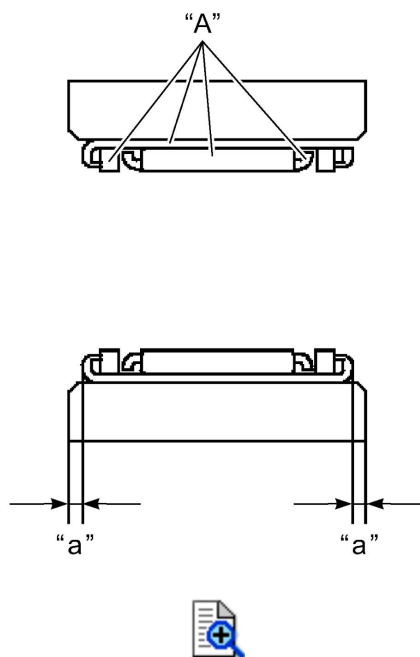
- 1) Apply a small quantity of the grease to housing when installing the bearing.
- 2) Press the new cushion lever bearing into the swingarm to the depth "a" of 1.5 mm (0.06 in) from the edge with the special tool and suitable size socket wrench.

"A": Grease 99000-25011 (SUZUKI SUPER GREASE A)

Special Tool

(A): 09924-84521





- 3) Install the center spacer.
- 4) Apply a small quantity of the grease to housing, when installing the bearing.

NOTE:

The stamped mark side of the pivot bearing faces outside.

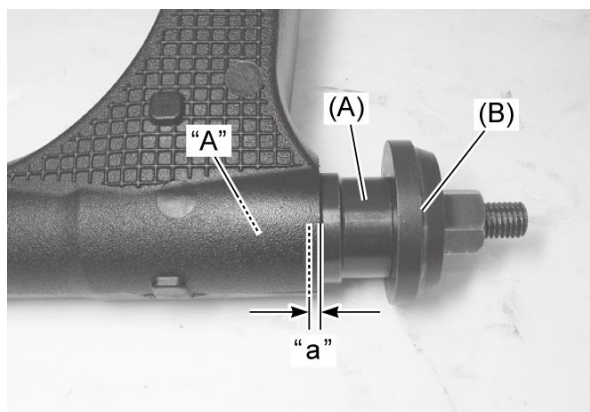
- 5) Press the new pivot bearings into the swingarm to the depth "a" of 0 – 0.5 mm (0 – 0.02 in) from the edge with the special tools.

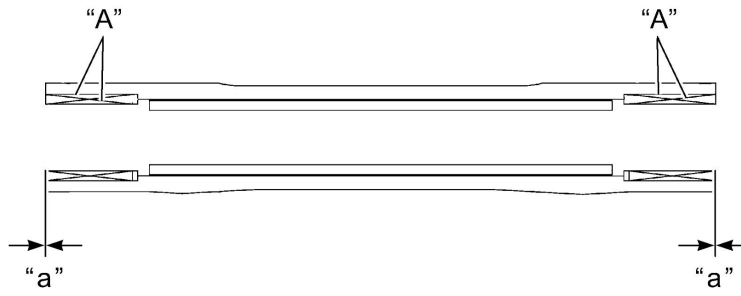
"A": Grease 99000-25011 (SUZUKI SUPER GREASE A)

Special Tool

(A): 09913-70210

(B): 09941-34513





6) Apply grease to the bearings.

"A": Grease 99000-25011 (SUZUKI SUPER GREASE A)

